




# History of styles

- 
- All jobs
  - Shape space - drawing
  - Process design - thumbnail
  - History style - ref
  - Composite – drawing comp
  - Color - grading
  - Perspective – drawing
  - Setdesign - final
  - Costume design – costume
  - Tools
  - Event design

Romantic ERA 1785-1830







C. 1830

933 WYTERKALDER: *The Duchess of Ansbach*, 1846.



ref

- The Duchess (2008)
- *“The Age of Innocence”* (1993)
- Shakespeare In Love
- The Young Victoria (2009)
- Belle (2013)



Victorian Era 1830-1900







2


>>

3

>>

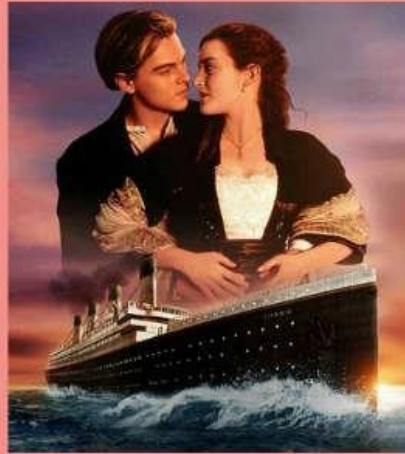
4

>>

- 
- Gone with the wind
  - “The Four Feathers” (2002)
  - *Little Women*
  - *Oliver!*
  - *Around the World in 80 Days.*
  - ”Stardust” (2007)
  - A Midsummer’s Night Dream (1999)



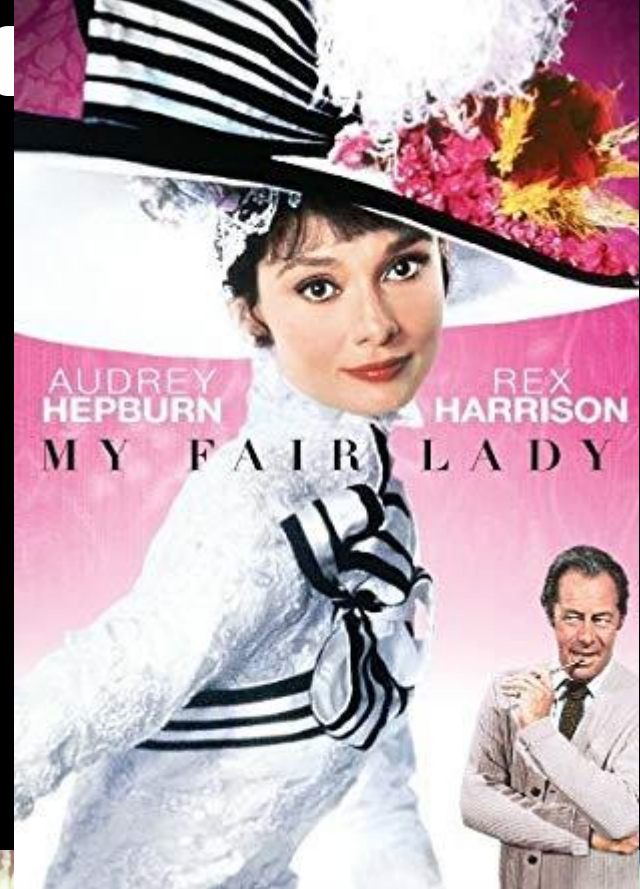
# Edwardian Era 1900-1910



## THE EDWARDIAN ERA

(1901-1914)





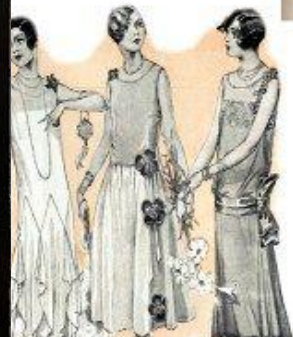
- 
- Titanic
  - A ROOM WITH A VIEW (1985)
  - MISS POTTER (2006)
  - THE SECRET GARDEN (1993)
  - SOMEWHERE IN TIME (1980)
  - MY FAIR LADY (1964)




# 1920's Art Deco







- 
- Coco before chanal
  - Great Gasby
  - Jazz singer





# 1930's great depression





Fashion Tailored  
*Gabardines*

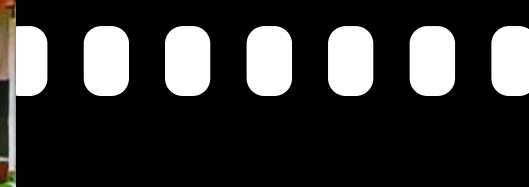
- Clear, rich colors
- Close, even twill weave
- Newest, full-draped styling

Wrinkle-resistant, full-bodied spun rayon \$4.98  
Worsted and rayon blend Last Spring wool \$6.45 \$5.95

"California" style "irresistible" wool \$11.95  
Last Spring wool \$12.85  
Saddle-attached side seams \$13.95  
Giant PAGE 461... TROUSERS

Reg. size \$7.94 Larger sizes \$8.84  
Wrinkle-resistant, full-bodied spun rayon \$4.98  
Worsted and rayon blend Last Spring wool \$6.45 \$5.95  
"California" style "irresistible" wool \$11.95  
Last Spring wool \$12.85  
Saddle-attached side seams \$13.95  
Giant PAGE 461... TROUSERS

Descriptions on opposite page. Choose a smart sport or leisure jacket for a complete casual outfit!



HAVE THE ADVENTURE OF YOUR LIFE KEEPING UP WITH THE JONESES.

**INDIANA JONES**  
and the  
**LAST CRUISE**


PARAMOUNT PICTURES PRESENTS A LUCASFILM LTD. PRODUCTION A STEVEN SPIELBERG FILM  
HARRISON FORD  
INDIANA JONES AND THE LAST CRUISE DENZEL WASHINGTON DENZEL WASHINGTON ALISON DOVEY JOHN WOODS JILLIAN GLOVER  
WITH BOB OPEL  
BY JOHN WILLIAMS MUSIC BY MICHAEL KORNBERG COSTUME DESIGNER MICHAEL KORNBERG EDITOR ANTHONY PORTER EXECUTIVE PRODUCERS GEORGE LUCA AND MARIO WUOLFEY PRODUCED BY GEORGE LUCA AND MARIO WUOLFEY WRITTEN BY RICHARD MATTESON AND STEVEN SPIELBERG DIRECTED BY STEVEN SPIELBERG  
OPENS WEDNESDAY MAY 24 AT THEATRES EVERYWHERE.



Two men in dark suits standing side-by-side.

REINWOOD Tailoring  
GARDINER Worsted



- 
- untouchable 1987
  - Seabiscuit 2003
  - cinderella man
  - Indiana Jones



>>

0

>>

1

>>

2

>>

3

>>

4

>>



1940's ww2







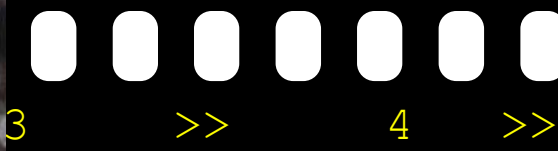
- 
- godfather
  - Atonement
  - Film noir
  - english patient

1950's ratio



© PUBLICITY PICTURE





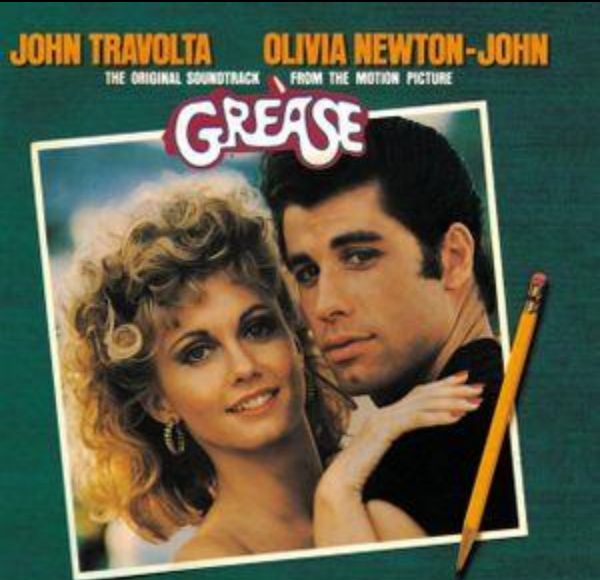
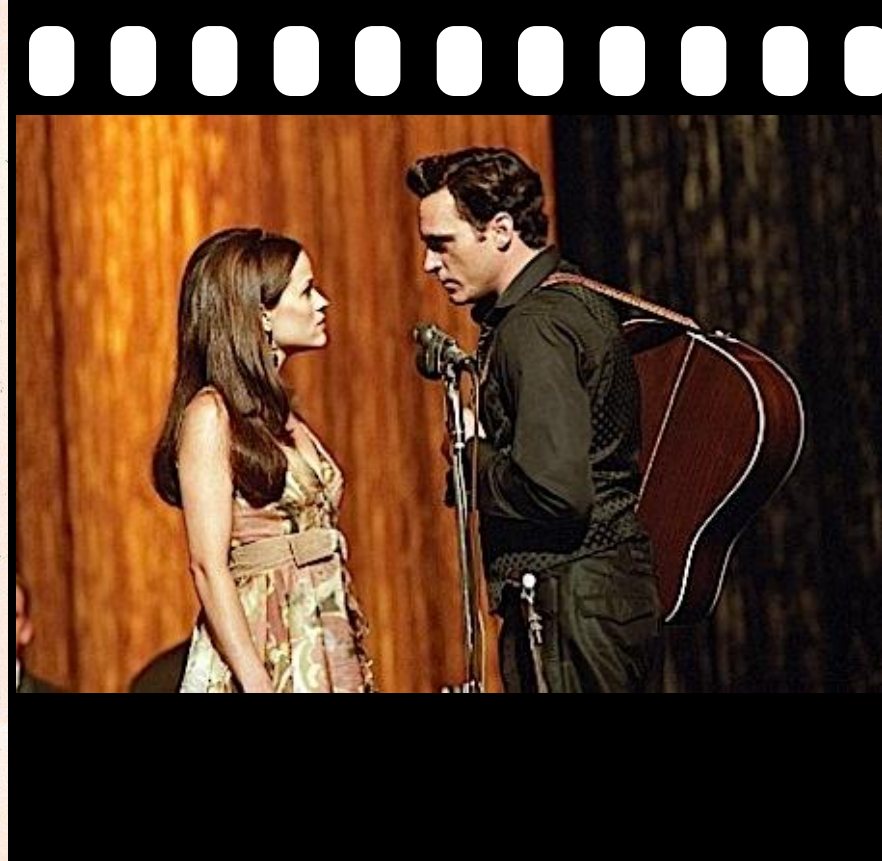
- 
- *Vertigo* (1958)
  - Pleasantville (1998)
  - Catch Me If You Can (2002)
  - Hairspray (2007)
  - Boogie Nights (1997)
  - That Thing You Do! (1996)
  - A Beautiful Mind (2001)




# 1960-1970's Hippy

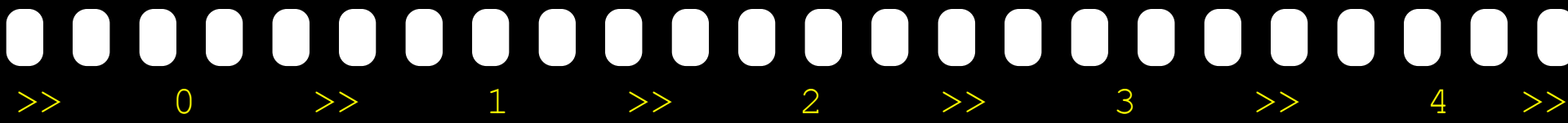








- 
- grease
  - The Graduate (1967)
  - Jame bond's Sean Connery
  - *Walk the Line* (2005)
  - *The Doors* (1991)



# 1980's Pop culture







# 1990's MTV





